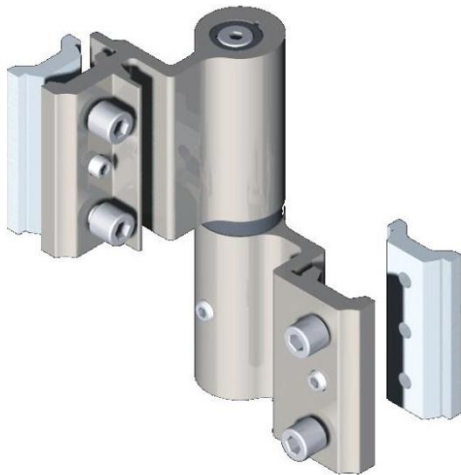
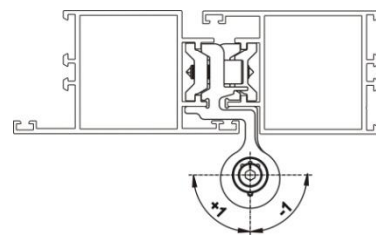


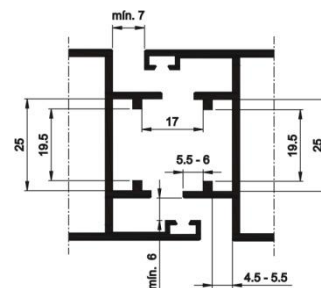
- FOR HEAVY AND HIGH TRAFFIC DOORS, 50 mm.
- MAXIMUM DIMENSIONS : 1000 X 2000 mm.
- MAXIMUM LOAD OF 120 Kg. FOR TWO HINGES.
- EXTERNAL AND INTERNAL OPENING.
- LATERAL MICROMETRIC SETTING OF +/- 1mm. (LOADED DOOR, IMPOSSIBLE TO UNSET).
- ANTI-VANDALISM SHAFT.
- ANTI-BURGLAR GEOMETRY.



DIMENSIONS (mm)



SCOPE AND COMPATIBILITY



TEST	STANDARD	RESULT
Resistance to corrosion	UNE-EN 1670	Grade 4

MATERIALS	
Frame	Extruded aluminium
Screws	Stainless steel
Shaft	Stainless steel
Bush	POM

FINISHING TOUCHES AND SURFACE TREATMENTS						
WHITE	BLACK	RAL	SILVER	GOLD	BRONZE	INOX

PACKAGING
10 units with assembled shafts and sleeves, in a 333x190x70 mm box