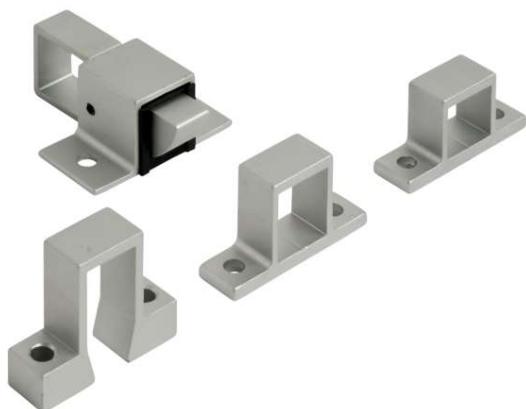
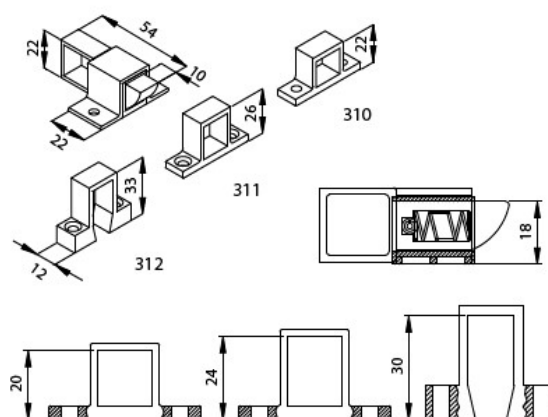


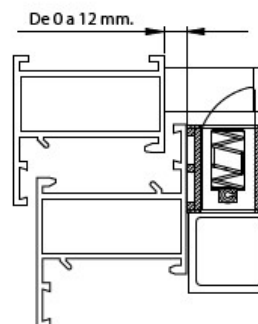
- 310: FLAT (TOTAL HEIGHT 22mm.)
- 311: WITH 4mm. (TOTAL HEIGHT 26mm.)
- 312: WITH 11mm. (TOTAL HEIGHT 33mm.)
- Possible delivering of other devices, (11mm maximum), on special order



DIMENSIONS (mm)



ASSEMBLY PATTERN



TEST	STANDARD	RESULT
Resistance to corrosion	UNE-EN 1670	Grade 4

MATERIALS	
Frame and keepers	Extruded aluminium
Bolt	Extruded aluminium
Guide	Polyamide
Spring	Steel
Rivet	Steel

FINISHING TOUCHES AND SURFACE TREATMENTS

PACKAGING

50 units of the same reference in a 332x190x75 mm box.